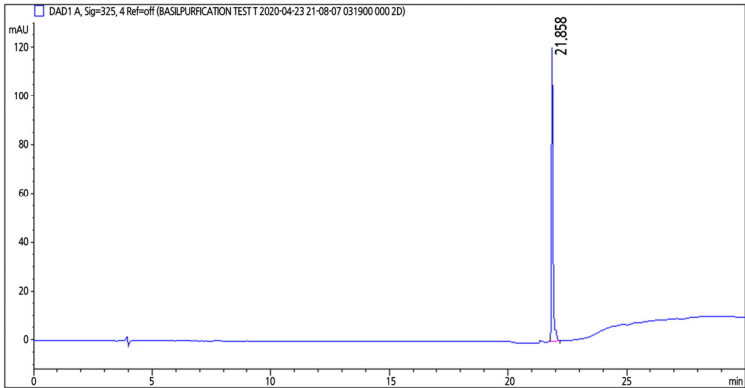
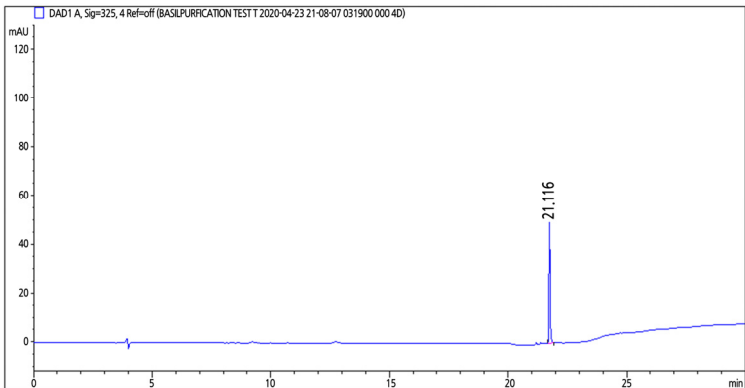
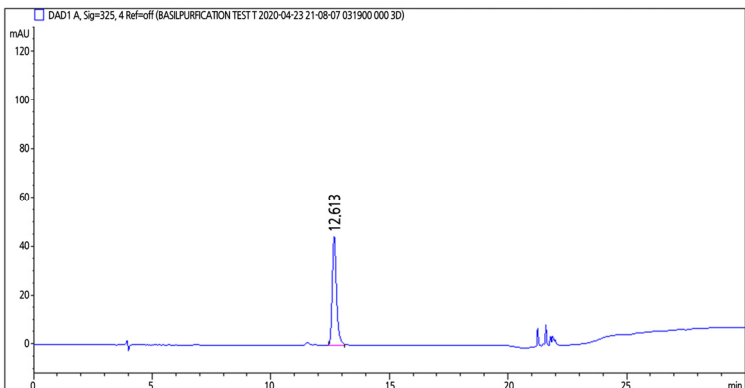
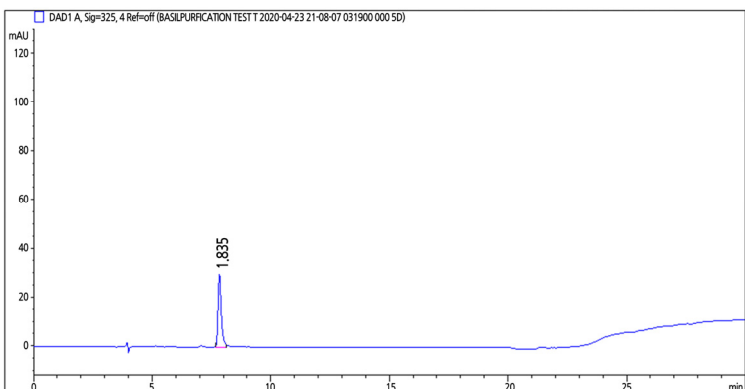
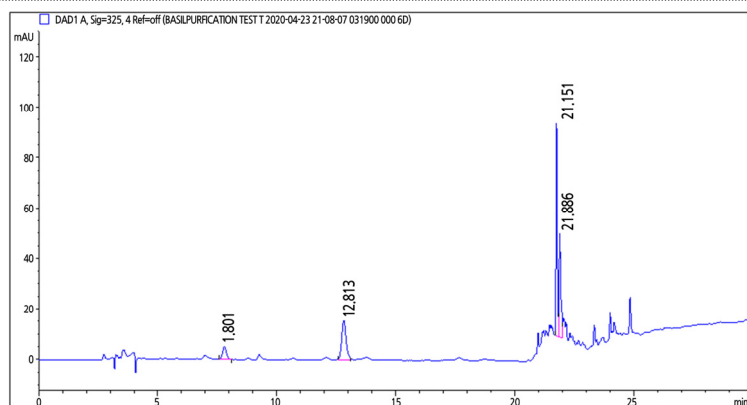


Supplementary Table. 1s. Special Issue

Compound	R.T	chromatogram
Chicoric acid	21.858	
Rosmarinic acid	21.746	
Caffeic acid	12.673	
Caftaric acid	7.835	

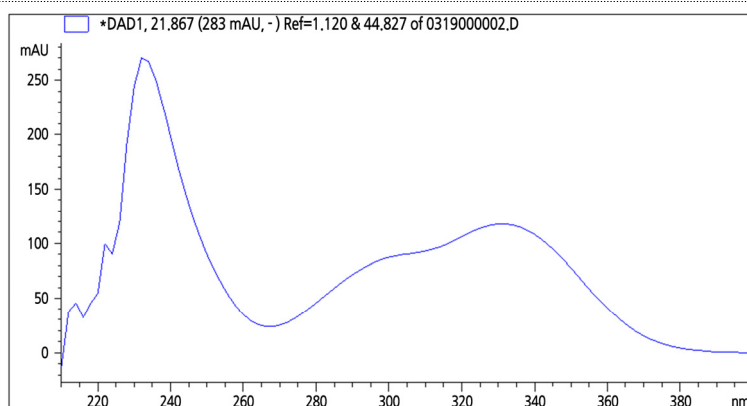
Sample

-



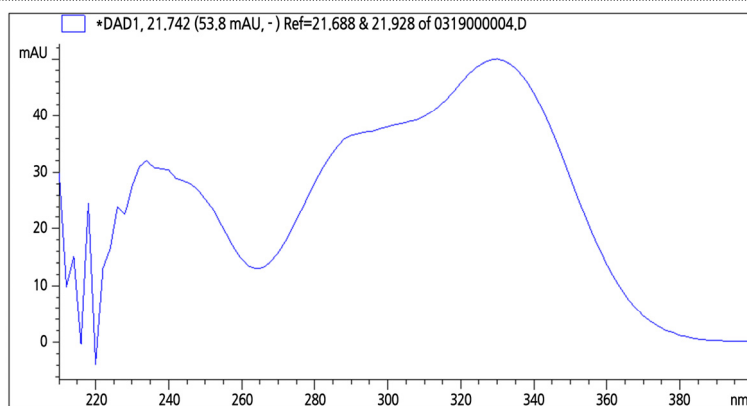
Chicoric acid

21.858



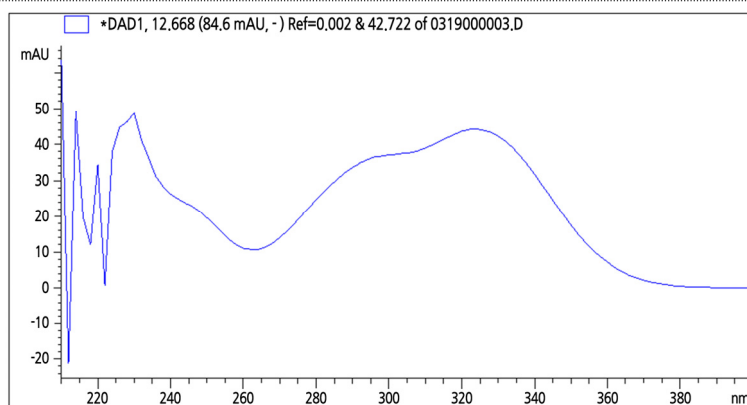
Rosmarinic acid

21.746



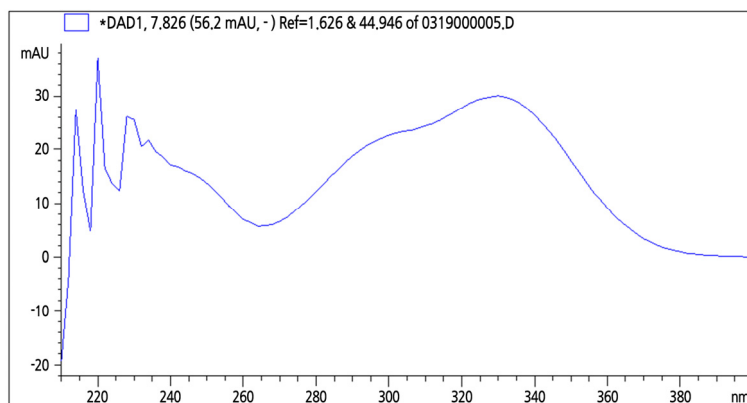
Caffeic acid

12.673



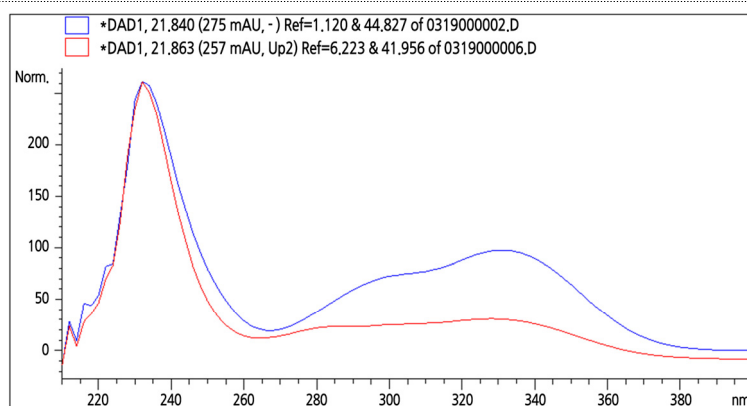
Cafaric acid

7.835



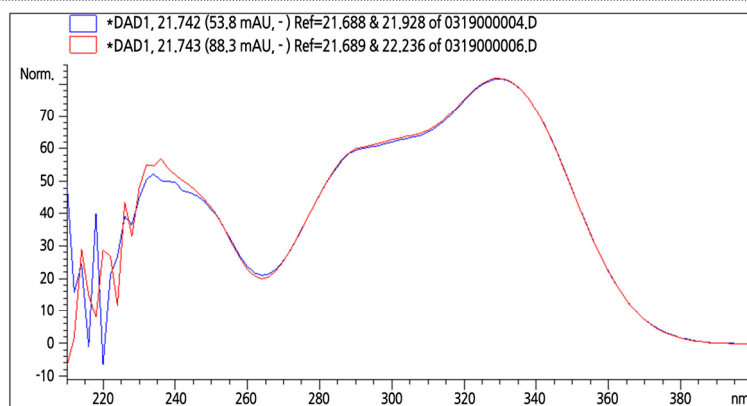
Chicoric acid

21.858



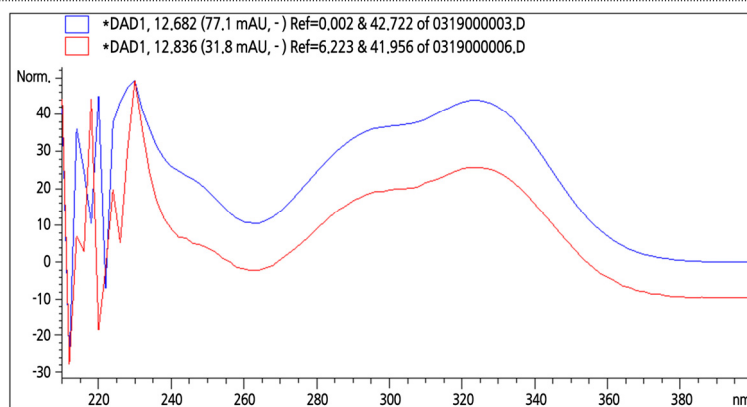
Rosmarinic acid

21.746



Caffeic acid

12.673



Caftaric acid

7.835

